

## About Us

Alsager Community Support provides a free, local and confidential service for people in any kind of need in Alsager and surrounding areas.

The centre is staffed by experienced volunteers who work in partnership with professionals from other organisations.

## Opening Hours

Our centre is open

**Mon, Wed, Fri from 9.30-12.30**

N.B. Times may vary due to COVID-19 limitations & volunteers' availability. Please call us or see our website for the latest information.

## Free Legal Advice

Ask for details

Free initial consultation with a solicitor covering a wide range of legal services

## Contact Us

### Alsager Community Support Centre

5A Lawton Road, Alsager,  
Cheshire, ST7 2AA

Access from Fairview (Civic) Car Park, next to the Community Church

Phone: **01270 876605** (9.30-17.00)

Email: [info@alsagercommunitysupport.org.uk](mailto:info@alsagercommunitysupport.org.uk)

 Like us on Facebook

Web: [alsagercommunitysupport.org.uk](http://alsagercommunitysupport.org.uk)

Donations welcome: Co-op Bank,

Code 08-92-99 A/c No 65390674

Reference: ACS



Supported by

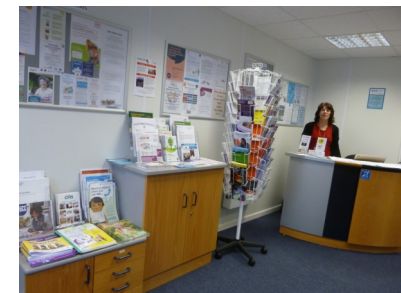


Supported by



Free, Local, Confidential

**ALSAGER  
COMMUNITY  
SUPPORT  
01270 876605**



A project of

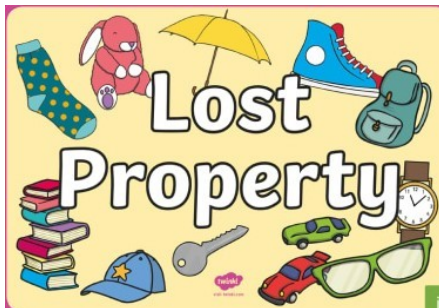


## What We Offer

- ◆ **Telephone Helpline** for people in need (01270 876605)
- ◆ **Befriending & shopping help** for vulnerable people
- ◆ **Friendly support**, a listening ear and practical help, all completely free and in confidence
- ◆ **Information and advice** on a wide range of matters, including welfare, benefits, legal, housing, health, debts etc., signposting to specialist help when needed.
- ◆ Free **benefits checks**, including Pension Credit, plus help to apply.
- ◆ Making **phone calls** to benefit agencies and local authorities
- ◆ **Referrals** to local authority and other professional organisations, as well as those run by voluntary organisations such as Foodbank.
- ◆ Access to **local services** run by voluntary organisations for the community in Alsager such as those caring for the elderly, young people, and the disabled,
- ◆ **Form filling** and letter writing
- ◆ Budgeting and **money management** advice
- ◆ **Job vacancies** notice board, with help to apply if needed
- ◆ Searching the **internet and printing** out information
- ◆ Helping to find someone who can assist you with **odd jobs**.
- ◆ Access to **local groups**
- ◆ Information about **volunteering** opportunities in Alsager
- ◆ Finding **cheaper fuel deals** and help with the switching process
- ◆ Support with **practical matters**, such as setting up email, phones etc.
- ◆ **Helping Hands** service (one-off tasks for vulnerable people)

## Lost and Found

for Alsager & district



## Pre-owned School uniform

All Alsager Schools (except Pikemere)

Also children's winter coats & shoes

Donations welcome

Orders to:

[uniform@alsagercommunitysupport.org.uk](mailto:uniform@alsagercommunitysupport.org.uk)



## Monthly Gift Scheme

Free Sanitary Products  
on request

